

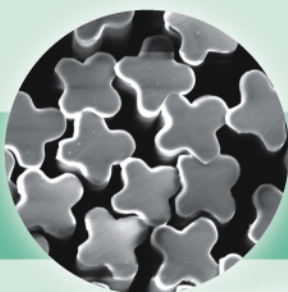
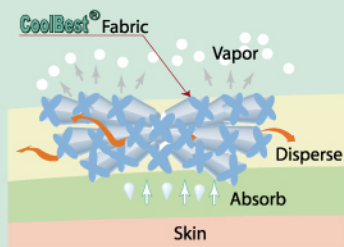
CoolBest®

Cool & Dry Polyester Fiber

CoolBest® is a functional polyester fiber with high-performance of moisture management. Due to the yarn has a specially designed "+" shape, take advantage of its high superficial measure of area and grooves, based on a siphon theory, it is more easier to move perspiration away from the body. In addition, it has more space between the filaments than the other regular ones. Therefore, it can rapidly wick sweat and keep your skin dry and comfortable.

Product Features

- 24 hours cool & dry.
- Quick dry as well as easy cleaning.
- Soft and comfortable touch.
- Easy care for customer.



Test Standard

The report of test is from Taiwan Textile Research Institute (T.T.R.I)



Remark

- By using hydrophilic finishing agents can have better effects.
- The effect might be influenced cause of the structural density of fabric structure and component.

Product Application

Sportswears, Leisure wear, Underwear, Shirts, Trousers