

Humanity & Aesthetics

人文美學



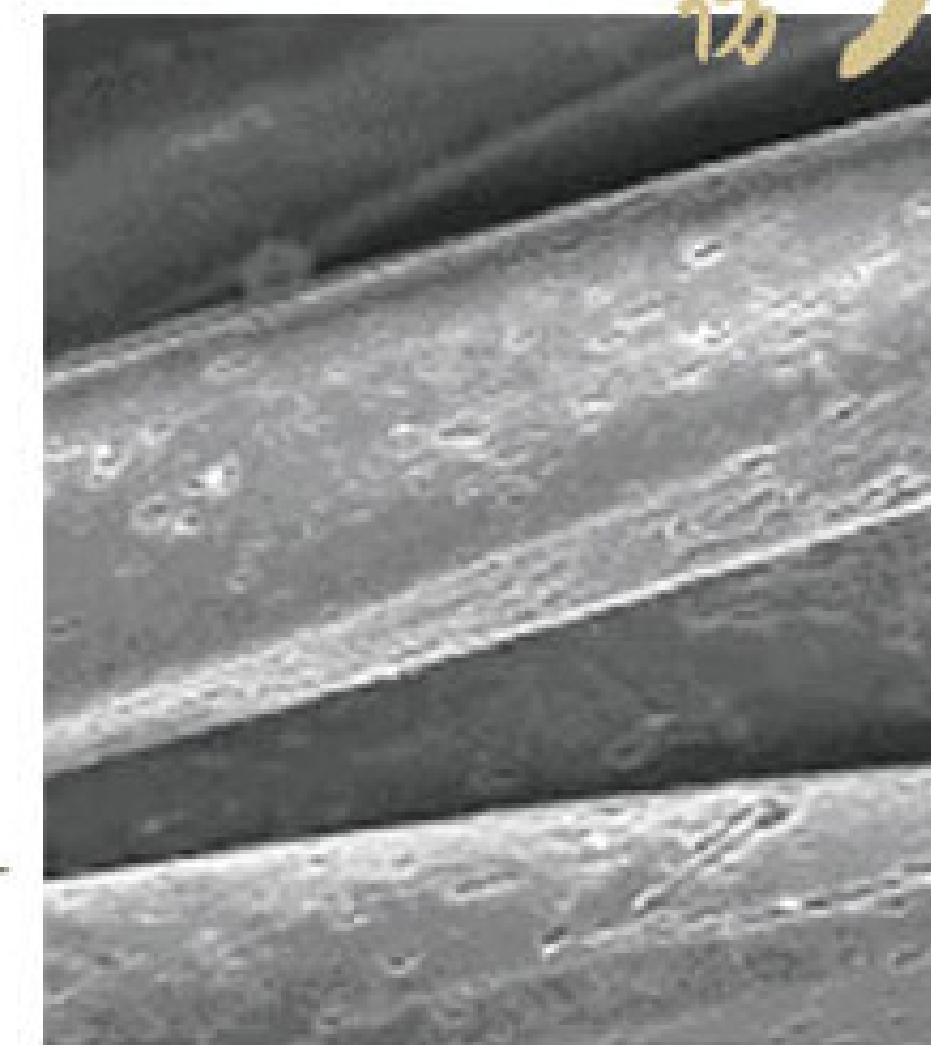
棉
Snowlea

LIBOLON Cottony Series 仿

棉

LIBOLON Linen Series 仿

麻

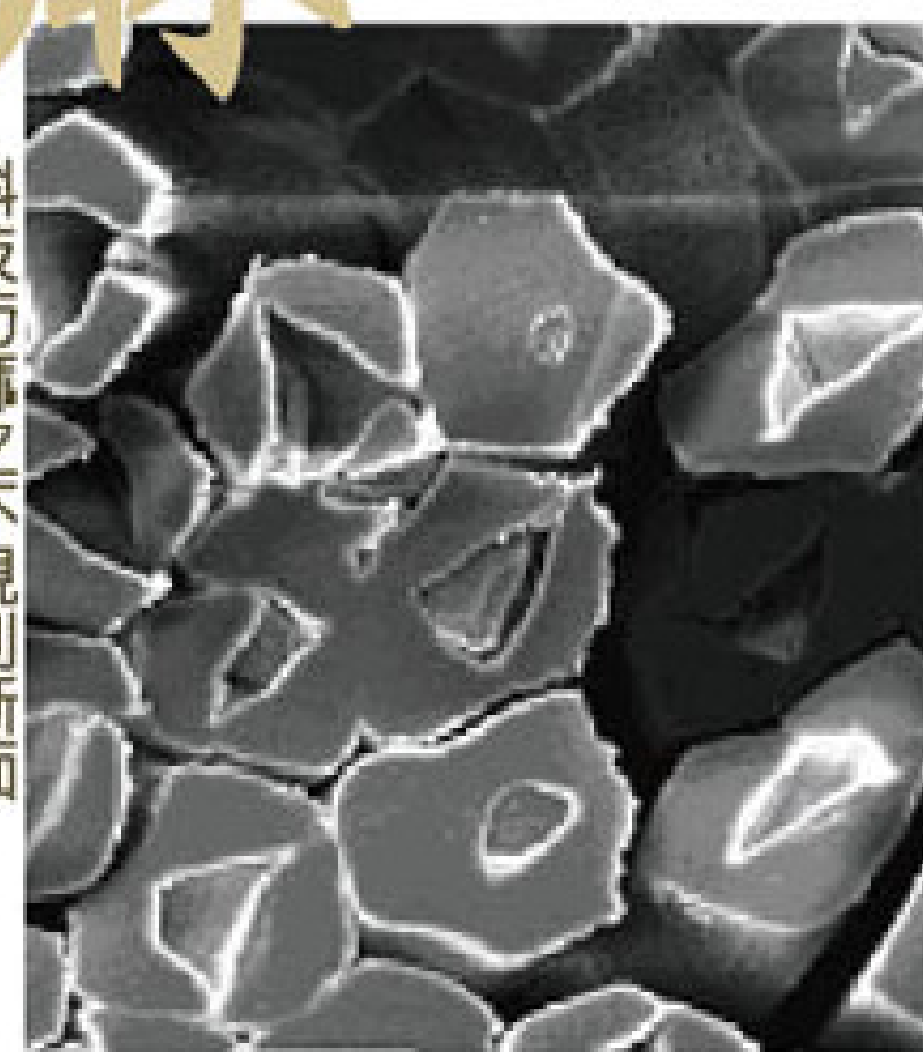


科技仿麻絲
Tecilinea

LIBOLON Linen Series

仿 麻

科技仿麻之不規則斷面
Irregular cross-section of Tecilinea



花式

LIBOLON Fancy yarn



粒
Nepslea

仿麻 LIBOLON Linen Series

紗種 Yarn Name	成份類別 Component	特性 Character	規格 Specific
雨水絲 LLY	100% PE(T) Melange(T/CD)	<ul style="list-style-type: none"> ● 布面呈現若隱若現仿麻粗細節距之特殊風格。 ● 乾爽手感，具雙色混合調。 ● 抗靜電及抗皺性佳。 ● The surface owns special linen-like slub effect. ● Dry touch, with two tone color. ● Superior antistatic and wrinkle-resistance. 	100 ⁰ /36F, 100 ⁰ /72F, 170 ⁰ /72F, 180 ⁰ /96F, 240 ⁰ /72F, 330 ⁰ /96F, 350 ⁰ /96F, 650 ⁰ /192F
科技仿麻絲 Teclinlea	100% PE(T) Melange(T/CD)	<ul style="list-style-type: none"> ● 仿高級絲麻外觀與觸感。 ● 不規則之纖維斷面、孔隙，吸濕性及散熱性佳。 ● 抗靜電性及抗起球性佳。 ● 抗皺性及尺寸安定性優於天然亞麻。 ● High quality silk-linen like surface and touch. ● Effectively dissipates heat and quick dry function due to irregular cross-section and micro crater. ● Superior anti-static and anti-pilling. ● Has better wrinkle resistance and dimension stability than natural linen. 	180 ⁰ /96F
應用範圍 End-Use	適用春夏男女裝、女用高級洋裝、睡衣、內衣及傢飾織物。 Menswear and womenswear for spring / summer, High class dress, Lingerie and Hometextile.		

仿毛 LIBOLON Woolly Series

紗種 Yarn Name	成份類別 Component	光澤 Luster	特性 Character	規格 Specific
毛感伸縮絲 NXwoolea	100% PE(T) Melange(T/CD)	SD	<ul style="list-style-type: none"> ● 具高彈性、柔軟豐厚仿毛調。 ● 可呈現純色、雙色調布面效果。 ● With stretch and bulk wool-like hand feel. ● With solid color or two-tone effect. 	190 ⁰ /108 F, 190 ⁰ /144 F, 280 ⁰ /120 F
舞龍絲 Wulonglea	Melange(T/CD) Multi-color(D/T/CD)	SD BR FD	<ul style="list-style-type: none"> ● 可呈現優雅變化浮白紋路效果。 ● 具雙色或三色混色調變化效果的梳毛調。 ● The fabric have a long-white-slub effect by dyeing the cation side alone. ● The slub pitch can be adjusted depends on customers' request. ● With two-tone or three tone effect. 	150 ⁰ ~2400 ⁰
白紋絲 Whitelea-RTK	100% PE(T) 100% Cationic(CD) Melange(T/CD)	SD BR FD	<ul style="list-style-type: none"> ● 優雅浮深浮白紋路、毛棉觸感，彩紋豐富。 ● 有柔和光澤的布面效果。 ● As the yarn with randomly diverse pitch will enable fabrics' surface a short-white-slub effect. ● With soft luster surface. 	150 ⁰ /48 F, 170 ⁰ /48 F, 180 ⁰ /96 F, 270 ⁰ /84 F, 300 ⁰ /192 F
樂麗絲 Leolea-MTK	100% PE(T) 100% Cationic(CD) Melange(T/CD) Multi-color(D/T/CD)	SD BR FD	<ul style="list-style-type: none"> ● 三色浮深紋路及變化節距效果。 ● 加捻後具乾爽手感，垂性佳。 ● Multi color and thick-and-thin effect. ● After twisting and weight reduction, the fabric can obtain better drapability. 	170 ⁰ /96 F, 300 ⁰ /192 F, 180 ⁰ /108 F
花彩絲 Floralea	100% PE(T) Melange(T/CD)	SD BR FD	<ul style="list-style-type: none"> ● 雙色自然節彩紋路效果及變化長短節距效果。 ● 仿毛料之豐厚手感。 ● With two-tone and natural-slub effect. ● Bulk wool-like hand feel. 	190 ⁰ /72 F, 200 ⁰ /72 F, 200 ⁰ /108 F, 280 ⁰ /84 F, 280 ⁰ /132 F, 280 ⁰ /178 F
應用範圍 End-Use	適用於流行感之高級男女套裝、裙褲料、汽車內裝織品及傢飾織物如窗簾、桌巾等。 High quality fashion suit for men and women, Motor vehicle upholstery fabric and Hometextile.			

* SD=semi dull=半光 BR=Bright=亮光 FD=Full dull=Tio₂ 鈍光 FD(Octalobal)=八角鈍光

仿棉

LIBOLON Cottony Series

紗種 Yarn Name	成份類別 Component	光澤 Luster	特性 Character	規格 Specific
柔麗絲 Jolea	100% PE(T) 100% Cationic(CD) Melange(T/CD)	SD	<ul style="list-style-type: none"> ● 可濃染，棉感佳，手感柔軟，豐厚。 ● 加燃後垂性佳。 ● Be able to exhibit brilliant color and cotton-like hand feel. ● To twist the yarn and go through a weight-reduce process, the fabric can obtain a better drapability. 	190 ⁰ /96 F, 190 ⁰ /108 F, 270 ⁰ /120 F, 540 ⁰ /240 F
胖瘦絲 Pansolea-TTK	100% PE(T)	SD	<ul style="list-style-type: none"> ● 具有浮深紋路及變化長短節距的明顯紋路效果。 ● 棉感佳，可強燃、垂性佳。 ● The yarn with thick-and-thin effect. ● Good cotton-like hand feeling and drapability. 	150 ⁰ /96 F, 280 ⁰ /84 F, 300 ⁰ /192 F, 320 ⁰ /96 F
	100% Cationic(CD)	FD(TiO ₂)		
	Melange(T/CD)	FD(Octalobal)		
海綿絲 Sponglea	100% PE(T) Melange(T/CD)	SD	<ul style="list-style-type: none"> ● 膨鬆、超柔軟棉感適用於針織織物。 ● 觸感柔軟，吸水性及透氣性佳。 ● Extraordinary soft and bouffant knitting fabric. ● Excellent water absorbability and air permeability. 	900 ⁰ /288 F, 1200 ⁰ /384 F, 1800 ⁰ /576 F, 2400 ⁰ /768 F
雪中紅 Snowlea	100% PE(T) Melange(T/CD)	SD	<ul style="list-style-type: none"> ● 布面具有柔軟棉粒。 ● 柔軟且具高膨鬆性。 ● With soft neps effect. ● Excellent soft and bouffant hand feeling. 	320 ⁰ /108 F, 650 ⁰ /324 F, 650 ⁰ /336 F, 650 ⁰ /360 F
應用範圍 End-Use	適用於男女套裝、裙褲料、傢飾織品及汽車內裝織品。 Men's and women's suits, Hometextile and Motor vehicle upholstery fabric.			

花式

LIBOLON Fancy yarn

紗種 Yarn Name	成份類別 Component	特性 Character	規格 Specific
粒仔絲 NepsLea	100% PE(T) Melange(T/CD)	<ul style="list-style-type: none"> ● 布面有浮深或浮白仿天然棉粒之效果。 ● 具天然棉柔軟觸感。 ● With the dark-and-light neps simultaneously. ● Naturally rustic appearance and cottony touch. 	180 ⁰ /72 F, 280 ⁰ /84 F, 350 ⁰ /120 F, 600 ⁰ /204 F
節粒絲 SlubLea	Melange(T/CD)	<ul style="list-style-type: none"> ● 布面有浮深及浮白仿棉粒竹節多色效果。 ● 常用於雙色調之仿山東綢織物。 ● With the dark-and-light neps and visual slub effect. ● This yarn is commonly used in Shantung pongee. 	140 ⁰ ~600 ⁰
應用範圍 End-Use	適用於禮服、高質感女套裝、裙褲料、傢飾織物及汽車內裝織物。 Wedding and evening dress, High quality suit for women, Hometextile and Motor vehicle upholstery fabric.		

LIBOLON Linen Series

雨水絲 LLY



仿麻

雪中紅 Snowlea

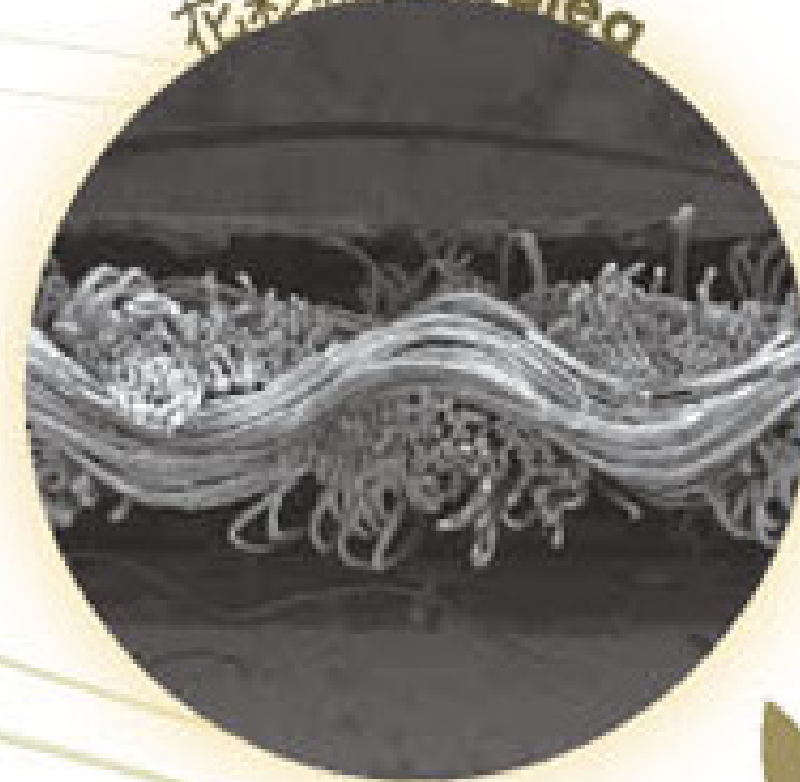


LIBOLON Cottony Series

仿棉

LIBOLON Woolly Series

花彩絲 Floralea



仿毛

LIBOLON Fancy Yarn

顆仔絲 Nepslea



花式





美學紗線

- **LIBOLON**四系列美學紗線，在紡絲階段可添加特殊機能性元素，如阻燃、抗菌、吸濕快乾、散熱涼爽等素材。原素材原料亦可運用由使用過的寶特瓶回收再生纖維 (RePET™) 環保素材製成。
All of the yarn series of LIBOLON can add the functional material in spinning process such as flame-retardant, anti-bacterial, quick dry, thermolysis and coolness...etc. Even it can also becomes the environmentally friendly fabric via making form recycling of post consumer PET bottles.
- 各類紗線之規格、丹尼、纖根數、光澤、斷面、成份等均能依需求提供客製化。
The component, Denier, the number of filament, luster and cross section could be adjusted depends on customers' demand.

人文美學 學子

Participation, Our Respect

Our Choice, Our Commitment

LIBOLON
come along with LIBOLON

LEALEA ENTERPRISE CO.,LTD
LI PENG ENTERPRISE CO.,LTD
11F, No. 162, Sung Chiang Rd., Taipei 104, Taiwan
Tel:886-2-2100-2188 Fax:886-2-2100-2178
www.LIBOLON.com.tw
E-mail:marketing@libolon.com.tw



愛惜地球·共盡心力
此文宣以環保回收紙製成
Printed by recycled paper

Humanity & Aesthetics Humanity & Aesthetics